



# COMBA OPEN RAN SOLUTIONS



Wide Breadth Open RAN  
RRU Solutions for  
Seamless Connectivity



**Comba**

## Features Highlight

- Open Fronthaul with Multi-vendors Support
- Rich Portfolio
- Field Proven
- ORAN Compliant and TIP-Approved
- Award-winning Patents



- High Energy Efficiency
- Multi RAT Support
- Compact Design
- NB-IoT & LTE-M
- Software-defined Radio

## Bridging Connectivity Gaps with Micro Cell

The introduction of the micro O-RU platform marks a pivotal advancement in our radio portfolio, strategically addressing a myriad of deployment scenarios.

With its versatile capability to support both TDD and FDD bands, the platform emerges as a comprehensive solution to bridge 5G coverage gaps and seamlessly integrate into densification rollouts as an overlay.

Beyond conventional outdoor applications, the micro O-RU platform finds utility in indoor scenarios, serving as an ideal signal source for In-Building Solutions (IBS) Distributed Antenna Systems (DAS).

Notably, its high energy efficiency, zero footprint, open fronthaul, and aesthetically pleasing design contribute substantial value to our customers, ensuring a harmonious blend of cutting-edge technology and environmental consciousness.

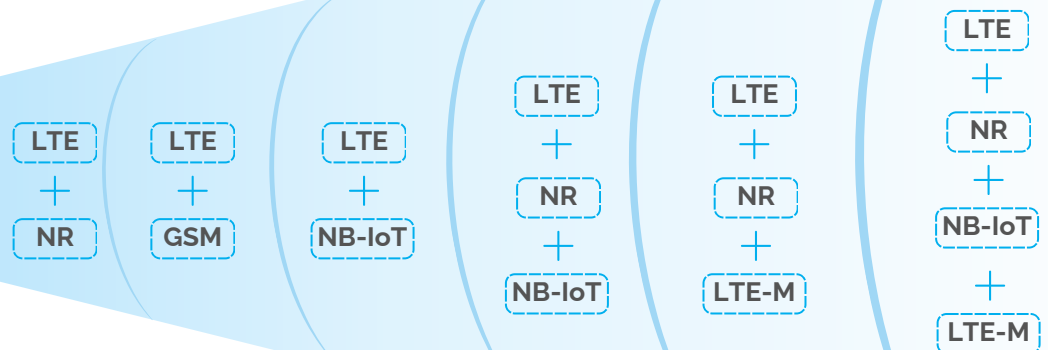


Single Band  
Micro O-RU

## Multi RAT: Full-service parity fulfils conventional network demands



**Multiband  
Macro O-RU**






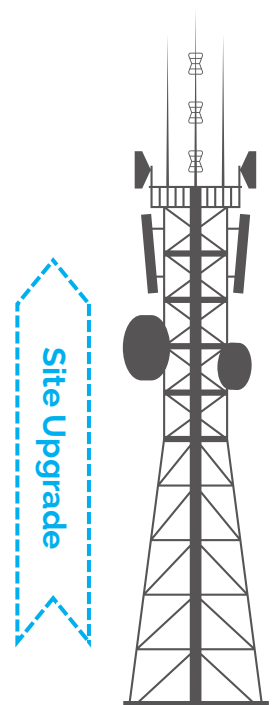
Greenfield or brownfield, tower sites need to support more than one technology. Comba's industry first O-RU to supports multi-RAT, including GSM, WCDMA, LTE, NR, NB-IoT and LTE-M. The state-of-the-art radio platform will accelerate Open RAN adoption in brownfield projects with fully open system architecture, without losing service parity.

## Software-defined O-RU DU software and RAT changes via M-plane

Open RAN is about flexibility, diversity, and interoperability, and the idea is to avoid "vendor lock-in". Over the years, Comba has made efforts to make its O-RUs truly open and interoperable, giving the mobile operators full control of ecosystem players in their network and de-risks DU software choice.

We understand the challenges faced by mobile operators when it comes to network modernization and capacity expansion. Comba software-defined radio support RAT upgrade could be done via M-plane without the need of frequent site visits. This helps in reduce the operation and maintenance difficulty, subsequently achieve cost saving in long run.

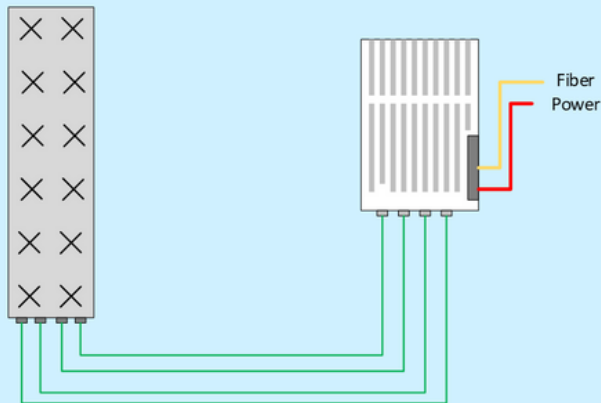
-  **No site visit**
-  **No hardware replacement**
-  **No rigger climbing up the tower**





## Multi-band O-RU: Providing Effective Cost Optimization

2 bands with dual band RRU



- ↓ Reduce the number of boxes on-site (compared to traditional single-band RRU)
- ↓ Reduce hardware space
- ↓ Reduce tower loading
- ↓ Reduce cabling complexity
- ↓ Reduce installation time and related labor cost

## Used in Global Open RAN Deployment and Trials

Thanks to the open interface, Comba O-RUs can be used globally in many countries, interoperating with different CU/DU vendors in the field and the lab, achieving high satisfaction levels throughout the customer journey.



- ✓ Europe
- ✓ Asia Pacific
- ✓ Latin America
- ✓ North America
- ✓ Middle East
- ✓ Africa



“

The TIP Requirements Compliant Ribbons awarded to Comba Network demonstrate their product maturity. We are excited to see an expansion in TIP-compliant hardware product line, and hope that more products and solutions with open interfaces emerge to enrich the ecosystem.

”



**RRU-3510**

### Single Band Macro O-RU

- Support LTE/ GSM/WCDMA/NR/NB-IoT/LTE-M\*
- 4T4R / 2T2R
- 60W / 40W per Tx
- Option 7-2x Cat A



**RRU-5820**

### Dual-Band Macro O-RU

- Support LTE/ GSM/WCDMA/NR/NB-IoT/LTE-M\*
- 4T4R / 2T2R
- 40W per Tx
- Option 7-2x Cat A



**RRU-5821**

### Tri-Band Macro O-RU

- Support LTE/ GSM/WCDMA/NR/NB-IoT/LTE-M\*
- 2T4R / 2T2R
- 60W/40W per Tx
- Option 7-2x Cat A



**RRU-5130**

### Single Band Micro O-RU

- Support LTE/NR
- 4T4R
- 10W per Tx
- Option 7-2x Cat A
- Lightweight, slim and sleek design

*\*Support single RAT by default, upgradeable via software update.*

*The above product information is for reference only, please contact our representatives for more information.*



## Enabling communications, anywhere, everywhere.

We listen and answer to your needs with our experience  
and capability in the industry.

[www.comba-ctnsl.com](http://www.comba-ctnsl.com)

Visit our website or contact our representative for more information.

**Linked in**



**YouTube**

